

# **STEERING**

## **“OFF ROAD APPLICATIONS”**

**For The Following:**  
**Forklifts, Tow Motors, Airport Tugs, Tractors & Etc.**

Typical “Ross HPS53” Power w/ Long Shaft shown below.  
To order this gear, We will need the Stenciled Number (Example: HPS71553 shown in illustration below) This number is located on Gear housing. It maybe necessary to Wash and Wire Brush the gear to locate it.

Call (281) 386-7229 for Price & Availability on all units.

Illustration (A)

HPS71553



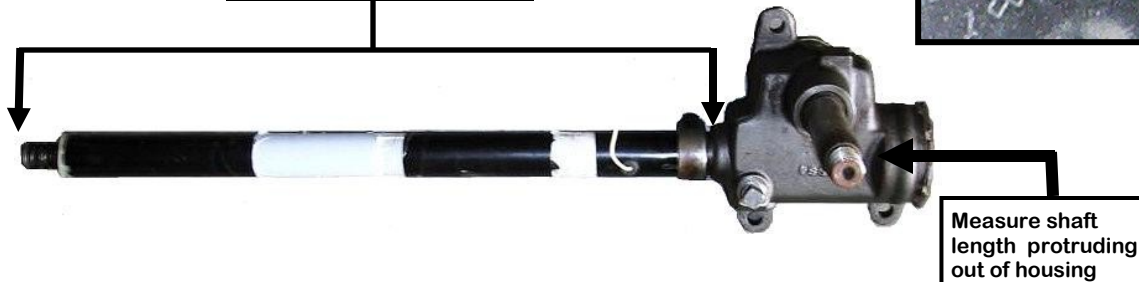
Typical “SAGINAW” Manual Gear w/ Long Shaft shown below.  
To order this gear, You will need the Casted / Stenciled Number (Example: 5692534 shown in illustration below ). This number is located on Gear housing. It maybe necessary to Wash and Wire Brush the gear to locate it. We will also need to know Steering column shaft length (See below) , Rotation (CW / CW) or (CW / CCW), Sector Shaft Length & Etc.

Call (281) 386-7229 for Price & Availability on all units.

Illustration (B)

Measure shaft length  
as shown below

5692534  
100



# **STEERING**

## **“OFF ROAD APPLICATIONS”**

**For The Following:**  
**Forklifts, Tow Motors, Airport Tugs, Tractors & Etc.**

**TO ORDER GEARS, WE WILL NEED TO KNOW: EITHER STENCILED NUMBER OFF OF HOUSING OR STENCILED NUMBER OFF OF TAG AS SHOWN BELOW IN ILLUSTRATION (I) and (J)**

**Illustration (E)**

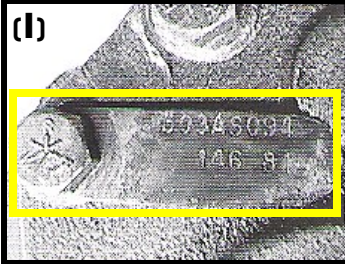
Typical ROSS “24DC26” Series Gear shown below



Common Tag Numbers for this gear:  
 253AS004, 253AS007,  
 253AS008, 253AS021,  
 253AS037, 253AS056,  
 253AS059, 253AS064,  
 253AS065

NOTE: Due to limited parts and Rebuildable cores being available. Remanufactured Gears are limited. Call (281) 386-7229 for “P&A”

**(I)**



**Illustration (F)**

Typical ROSS “503” Series Gear shown below



**Illustration (G)**

Typical ROSS “TA”, “TD” & “TE” series Gear shown below w/ Long Column

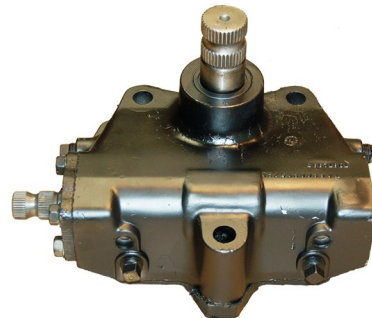


**(J)**



**Illustration (H)**

Typical ROSS “TA”, “TD” & “TE” series Gear shown below



# **STEERING**

## **“OFF ROAD APPLICATIONS”**

***For The Following:***  
**Forklifts, Tow Motors, Airport Tugs, Tractors & Etc.**

***TO ORDER “ROSS” HPS52, HPS53, HPS70, HPS71 & HPS72 SERIES GEARS, WE WILL NEED THE STENCILED NUMBER (SEE ILLUSTRATION “M”) LOCATED ON GEAR HOUSING. LOOK WHERE THE BOLD ARROWS ARE POINTING. DO NOT ORDER GEAR WITH RAISED CASTED NUMBER (ILLUSTRATION “N”).***

**Illustration (K)**

Typical Ross “HPS52” & “HPS53” Series Gear shown



**Illustration (M)**



**Illustration (N)**  
**CASTING NUMBER**

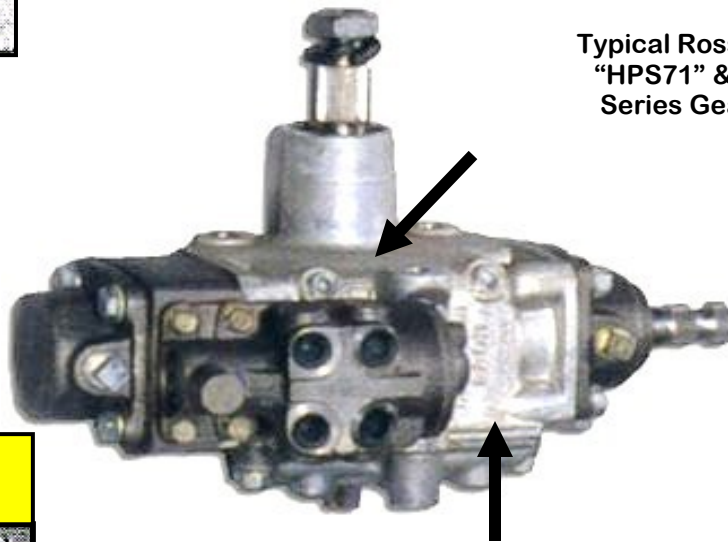


**Illustration (M)**



**Illustration (L)**

Typical Ross “HPS70”, “HPS71” & “HPS72” Series Gear shown



**Illustration (N)**  
**CASTING NUMBER**



# **STEERING**

## **“OFF ROAD APPLICATIONS”**

**For The Following:**

**Forklifts, Tow Motors, Airport Tugs, Tractors & Etc.**

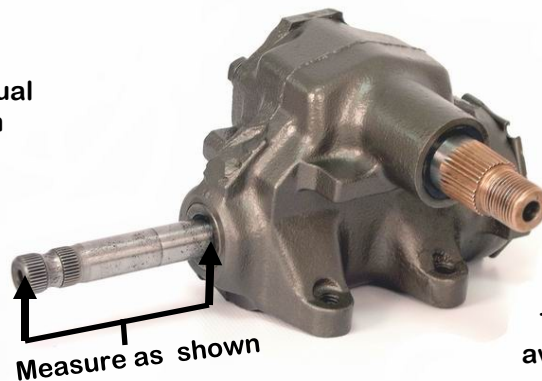
Typical “SAGINAW” Manual Gear shown below.

To order this gear, You will need the Casted / Stenciled Number (Example: #5692534 shown in illustration below ). This number is located on Gear housing. It maybe necessary to Wash and Wire Brush the gear to locate it. We will need to know Input shaft length (See below) , Input Shaft Description, Rotation (CW / CW) or (CW / CCW), Sector Shaft Length & Etc.

Call (281) 386-7229 for Price & Availability on all units.

### **Illustration (O)**

Typical SAGINAW Manual Steering Gear shown



### **Illustration (P)**



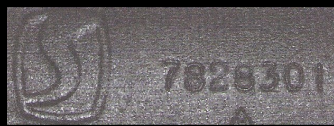
Typical Housing Numbers available: 5679142, 5698180

Typical “SAGINAW” Power Gear shown below.

To order this gear, You will need the Casted / Stenciled Number (Example: #7828301 shown in illustration “R” below ). This number is located on Gear housing. It maybe necessary to Wash and Wire Brush the gear to locate it. We will also need to know Input Shaft Spline count (Example: 30, 36 Splines) Rotation (CW / CW) or (CW / CCW), Number of Turns Lock to Lock & Etc.

Call (281) 386-7229 for Price & Availability on all units.

### **Illustration (R)**



### **Illustration (Q)**



Typical SAGINAW Power Steering Gear shown



# **STEERING**



## **“OFF ROAD APPLICATIONS”**

***For The Following:***  
**Forklifts, Tow Motors, Airport Tugs, Tractors & Etc.**

**“EATON”, “DAN FOSS”, “CHAR-LYNN”, “SAUER”,  
 “TRW/ROSS” Series Orbital / Control Valves**

**TO ORDER “ORBITAL / STEERING VALVES”, WE WILL NEED PART NUMBER  
 LOCATED ON PAPER or METAL TAG AS SHOWN IN ILLUSTRATIONS (1, 2 & 3).  
 PLEASE ALSO PROVIDE YEAR, MAKE & MODEL TYPE OF APPLICATION**

### **TYPICAL TAG ILLUSTRATIONS FOR VALVES SHOWN BELOW**

ILLUSTRATION (1)	ILLUSTRATION (2)	ILLUSTRATION (3)
		

### **TYPICAL “ORBITAL / CONTROL VALVE” ILLUSTRATIONS SHOWN BELOW**

ILLUSTRATION (S)	ILLUSTRATION (T)	ILLUSTRATION (U)	ILLUSTRATION (V)
	